



Bernard Dewagtere

France, SIN LE NOBLE

Ode To Joy (Symphonie No 9 - op. 125) Beethoven, Ludwig van

About the artist

Doctor in musicology, conductor and composer.

Compositions and arrangements from all eras, in all styles or musical genres and for any instrument or vocal training.

Qualification: PhD Musicology

Associate: SACEM - IPI code of the artist : 342990

Artist page : <https://www.free-scores.com/Download-PDF-Sheet-Music-bernard-dewagtere.htm>

About the piece



Title: Ode To Joy [Symphonie No 9 - op. 125]

Composer: Beethoven, Ludwig van

Arranger: Dewagtere, Bernard

Copyright: Copyright © Dewagtere, Bernard

Instrumentation: Tenor Saxophone, Piano

Style: Romantic

Comment: "Ode To Joy" (German: "Ode an die Freude", first line: "Freude, schöner Götterfunken") is an ode written in 1785 by the German poet, playwright and historian Friedrich Schiller, celebrating the ideal of unity and brotherhood of all mankind. It is best known for its musical setting by Ludwig van Beethoven in the final movement of his Ninth Symphony (completed in 1824), a choral symphony for orchestra, four s... (more online)

Bernard Dewagtere on [free-scores.com](https://www.free-scores.com)

LICENSE

This sheet music requires an authorization
- for public performances
- for use by teachers

Buy this license at :

<https://www.free-scores.com/licence-partition-uk.php?partition=26928>



- listen to the audio
- share your interpretation
- comment
- pay the licence
- contact the artist

Prohibited distribution on other website.

Ode To Joy (An die Freude)

Symphonie No 9 – op. 125

Ludwig van Beethoven (1824)

Allegro assai vivace alla Marcia ♩ = 84

Transc. : Bernard Dewagtere

Tenor Saxophone

Measures 1-8 of the score. The Tenor Saxophone part consists of whole rests. The Piano part features a rhythmic accompaniment with chords and moving lines. Dynamics include *p*, *più p*, and *pp*. There are markings for *Red.* and asterisks (*) below the piano staves.

Ten. Sax.

Measures 9-16. The Tenor Saxophone enters with a melodic line. The Piano continues with accompaniment. Dynamics include *f* and *mp*. There are markings for *Red.* and asterisks (*) below the piano staves.

Ten. Sax.

Measures 17-23. The Tenor Saxophone continues its melodic line. The Piano accompaniment features chords and moving lines. Dynamics include *sf*. There are markings for *Red.* and asterisks (*) below the piano staves.

Ten. Sax.

Measures 24-30. The Tenor Saxophone continues its melodic line. The Piano accompaniment features chords and moving lines. Dynamics include *sf*. There are markings for *Red.* and asterisks (*) below the piano staves.

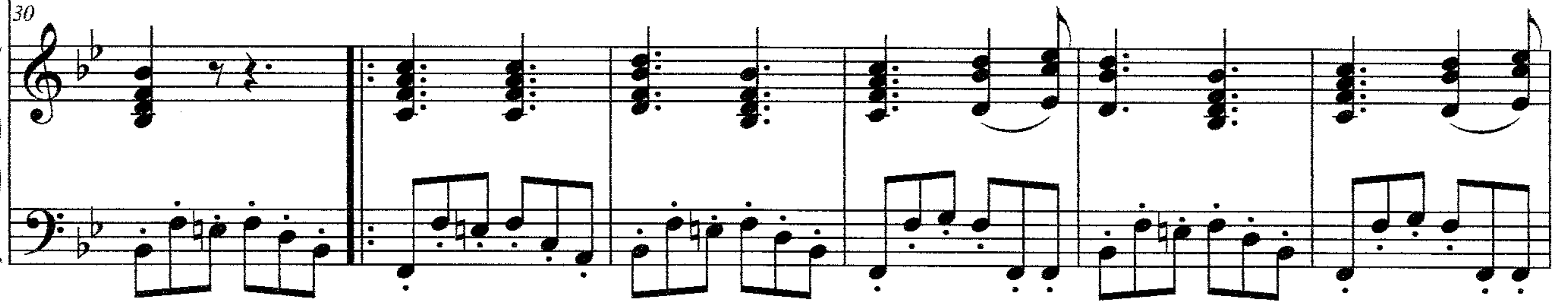
Ode To Joy (An die Freude)

2
30

Ten. Sax.



Pno

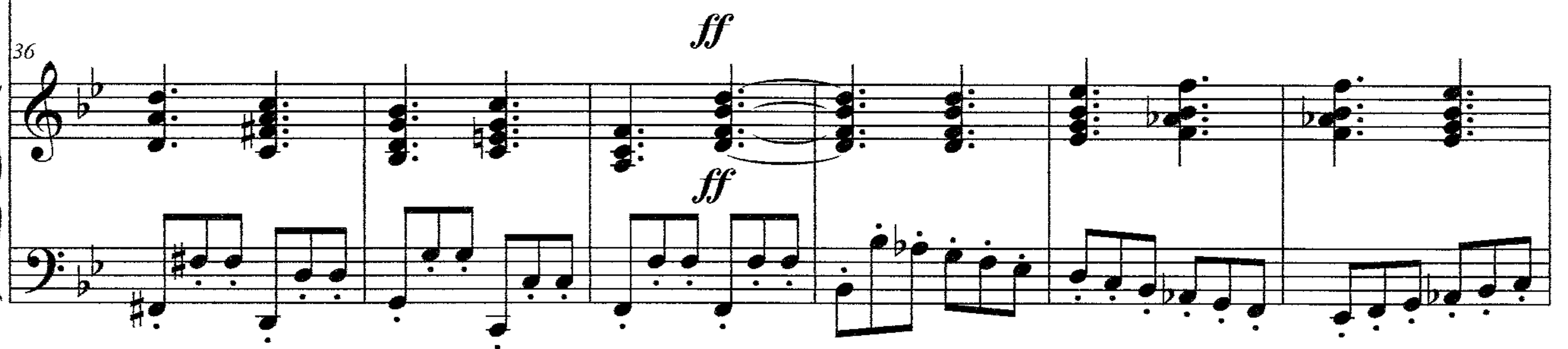


36

Ten. Sax.



Pno



42

Ten. Sax.

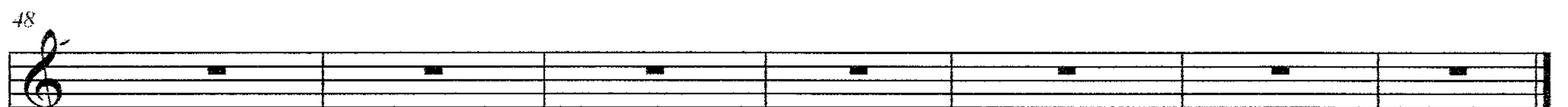


Pno



48

Ten. Sax.



Pno

